

# Ion® BA33i+

## Sump Pump with Built-In High Water Alarm

Patents Pending,

Patent No. 8,591,198, 9,033,686, 9,680,401,  
8,907,789, and 9,958,878



1/3 HP submersible sump pump with the versatility for pumping ground, surface, or effluent water with up to 1/2" solids.



Stainless steel housing and intake screen with cast iron base offers corrosion resistance and thoroughly protects from debris and wear in harsh environments.



Rated at 53 GPM of pumping capacity (\*at 10' of head), well equipped to meet high volume demand in basement sump or dewatering applications.

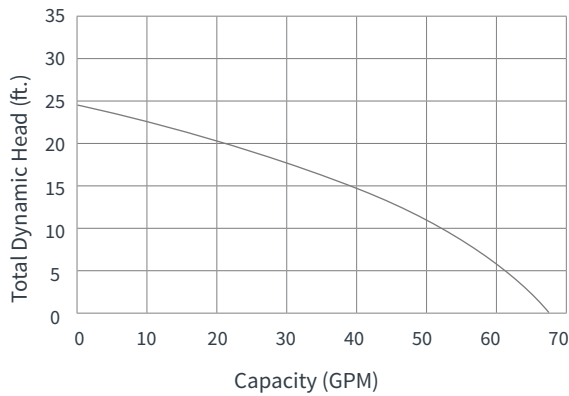


Integrated high water alarm. The included Ion+ Switch controls pump without moving parts or contact points and warns of elevated flood risk when detecting high water level.

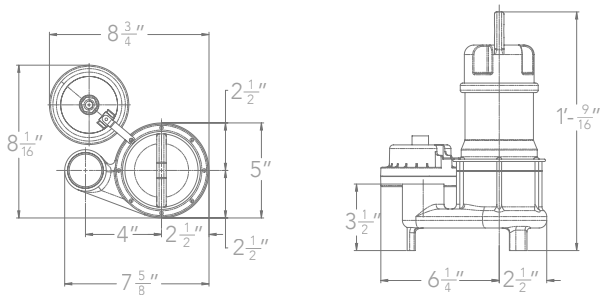


High efficiency motor consumes nearly half the power of most pumps with equal horsepower and of lesser capacities. Runs quietly and preserves energy.

## Pump Performance



## Pump Dimensions



## System Specifications

Typical Applications	<ul style="list-style-type: none"> <li>• Basement sump</li> <li>• Dewatering</li> </ul>
Maximum Capacity	Up to 68 GPM
Maximum Head	Up to 25'
Electrical Data	115 V, 1 Ø, 4.5 FLA, 60 Hz
Motor Data	$\frac{1}{3}$ HP, 3450 RPM
Recommended Minimum Basin Size	18" x 24"
Automatic Operation	i: Ion Digital Level Control (standard) SPI: Vertical float
Manual Operation	M: Manual
Materials of Construction	Cast iron & stainless steel
Impeller	Thermoplastic vortex
Power Cord	10' Standard
Discharge Size	$1\frac{1}{2}''$ NPT
Solids Handling	$\frac{1}{2}''$